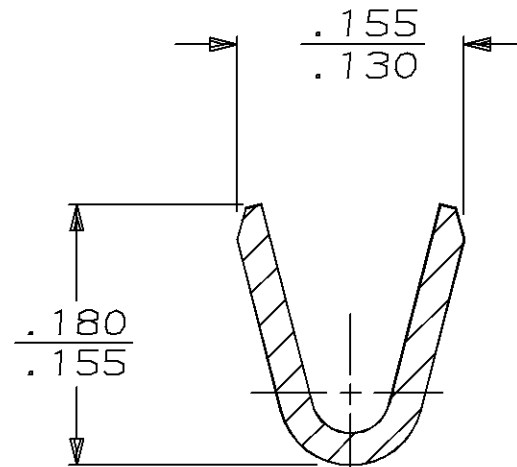
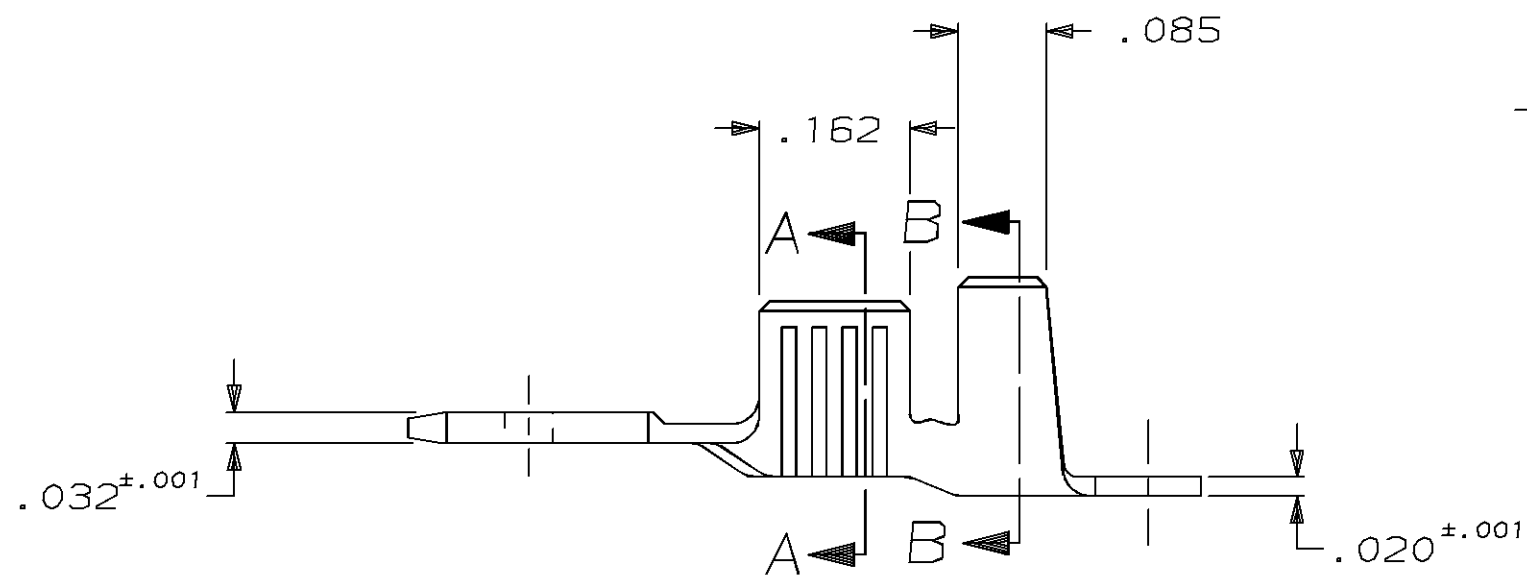
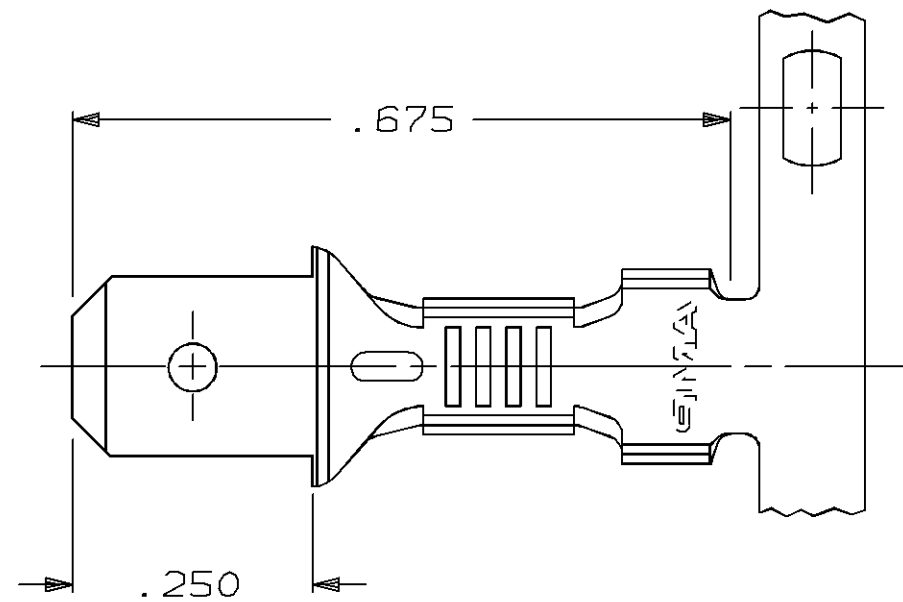
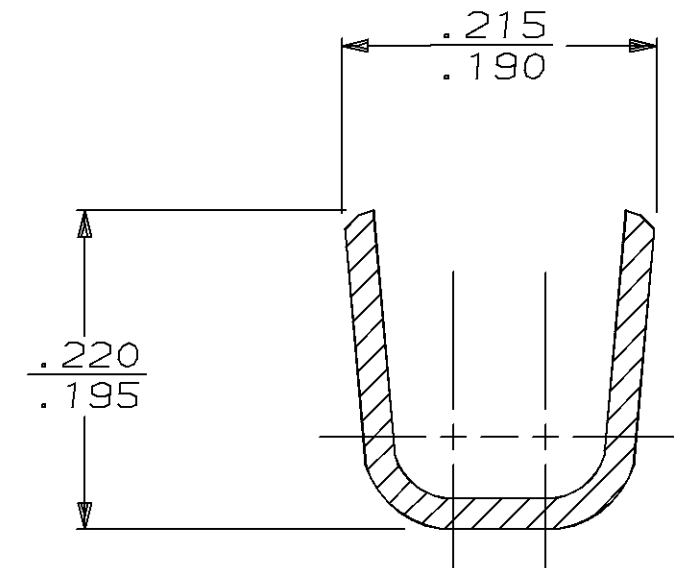


THIS DRAWING IS UNPUBLISHED. RELEASED FOR PUBLICATION, 19
 © COPYRIGHT 19 BY AMP INCORPORATED. ALL INTERNATIONAL RIGHTS RESERVED.

LOC	DIST	P	F	REVISIONS				
AF	50			ZONE	LTR	DESCRIPTION	DATE	APPD
					J	REV PER 0710-0214-96	5/17/96	JR/PD



SECTION A-A



SECTION B-B

OBSOLETE

TIN .000080 MIN	18-14	.120-.150	61687-2
-			61687-1
FINISH	WIRE SIZE	INSUL. RANGE	PART NO
DO NOT SCALE PRINT. UNLESS SPECIFIED DIMENSIONS IN INCHES TOLERANCES ON: 2 PLC DEC ± - 3 PLC DEC ± .015 ANGLES ± -	DR 2-27-89 DK SCHRUM CHK 2-27-89 JR RUTH APPD 2-27-89 C MEYERS	AMP AMP INCORPORATED Harrisburg, Pa. 17105 NAME TAB, FASTON™ .187 SERIES	
MATERIAL #2H PREMILLED BRASS	APPD 2-27-89 R KUZO PRODUCT SPEC -		
FINISH SEE TABLE	APPLICATION SPEC - WEIGHT -	SIZE B	FSCM NO 00779
		DRAWING NO 61687	SCALE 5:1
		SHEET 1 OF 1	